



TK International  
020 7794 8700  
www.t-k.co.uk

Residential Sales  
Residential Lettings  
Property Management

Sales Office:  
9 Heath Street  
Hampstead  
London NW3 6TP  
E: sales@t-k.co.uk

Lettings Office:  
16-18 Heath Street  
Hampstead  
London NW3 6TE  
E: lettings@t-k.co.uk

 tk.international  
 TK International  
 TK International



## **Maryon Mews Hampstead NW3**

Accessed via a charming cobbled pathway, this well-presented three-bedroom townhouse is situated in a desirable private gated mews in the heart of South End Green.

The house is filled with natural light and offers well-balanced accommodation across two floors. The first floor features an impressive open-plan reception/dining room that leads to a modern fitted kitchen. The second floor includes a master bedroom with an en-suite bathroom, two additional bedrooms, and a family bathroom. A staircase ascends to the top floor, providing access to a spacious roof terrace with far-reaching rooftop views. The property also benefits from a designated parking bay.

Maryon Mews is ideally located in the heart of South End Green, within walking distance of shops, cafés, Hampstead Heath Overground station, and the Heath. The fashionable amenities of both Hampstead and Belsize Park (Northern Line) are within half a mile.

**£5,000 Per Month**

**SOLE AGENT**



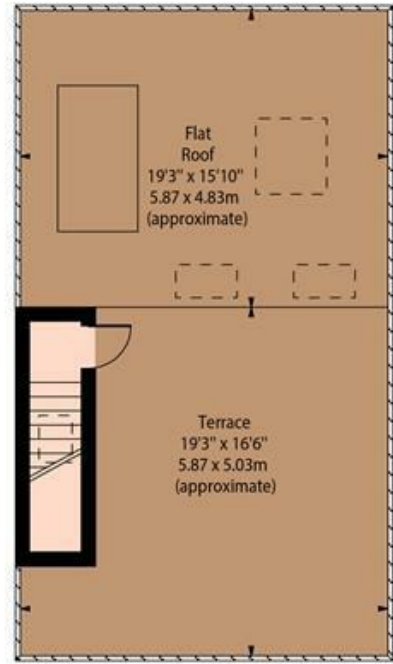




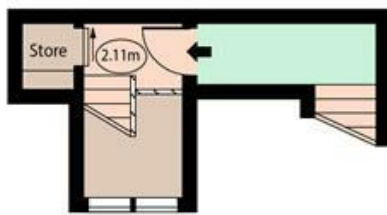
Maryon Mews Hampstead, NW3



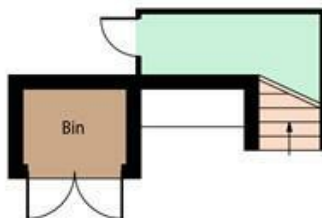
○ - Ceiling Height



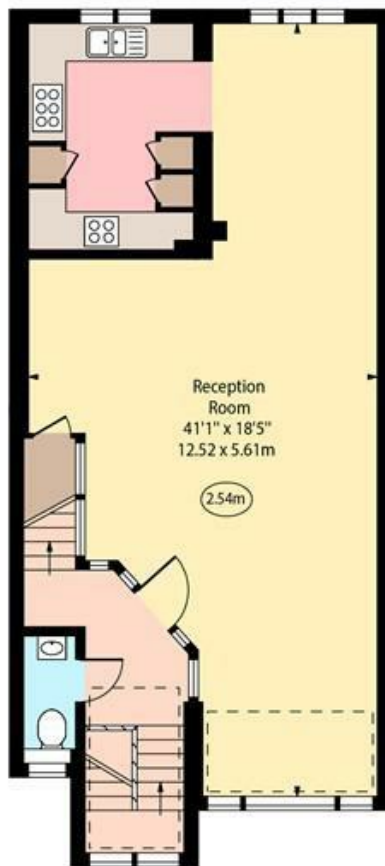
Third Floor



Upper Ground Floor



Lower Ground Floor



First Floor



Second Floor

Approx Gross Internal Area 1531 Sq Ft - 142.23 Sq M  
(Excluding Bin)

For Illustration Purposes Only - Not To Scale  
www.goldlens.co.uk  
Prepared for TK International  
Ref. No. 023461M