



TK International
020 7794 8700
www.t-k.co.uk

Residential Sales
Residential Lettings
Property Management

Sales Office:
9 Heath Street
Hampstead
London NW3 6TP
E: sales@t-k.co.uk

Lettings Office:
16-18 Heath Street
Hampstead
London NW3 6TE
E: lettings@t-k.co.uk

tk.international
TK International
TK International

1998 > 2023 Celebrating 25 years of trusted service.

TK 25



Hodford Road Golders Green NW11

Built approximately five years ago, a superb example of a detached double fronted 5-6 bedroom Schwoerer Haus designed family home, spanning 4,138 sq ft (384.4 sq m) and located in this desirable tree-lined road.

The ground floor provides a 43'5" reception room/dining area/study, Poggenpohl kitchen with Gaggenhau appliances and utility room. The first floor is arranged as a principal bedroom with en suite bathroom and 'his & hers' dressing rooms, two further double bedroom suites each with shower rooms and there are two further bedrooms on the second floor with a family bathroom.

The lower level has a 27'6" cinema room, 24'8" family room/bedroom 6, (currently used as a gym), shower room, second utility area and storage.

Additional benefits include underfloor heating to the upper floors, an air circulation system, a Sonos system and ground force heating for lower energy costs.

The house also boasts a 97' westerly facing landscaped garden and parking for two cars. The extensive transport amenities and facilities of Golders Green (Northern Line) are within 500 meters and Golders Hill Park is within a short walk.

£3,250,000

SOLE AGENT

Freehold





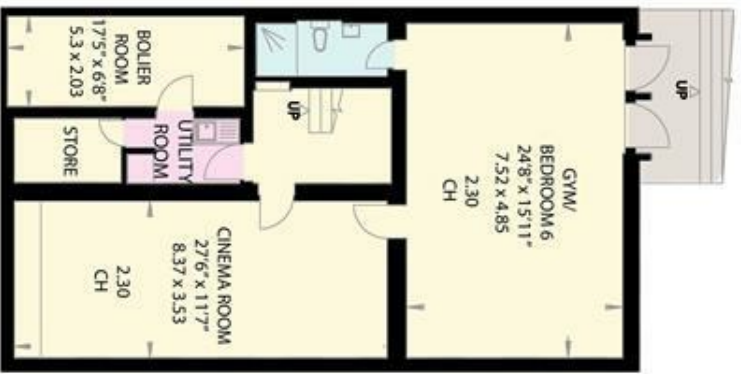
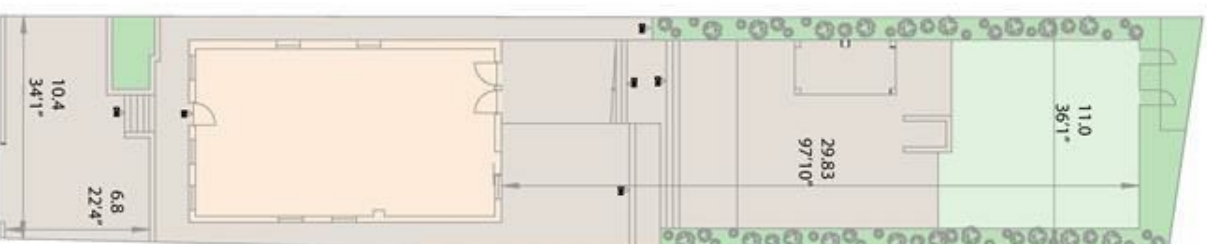


HODFORD ROAD
LONDON NW11



Gross Internal Area = 384.4 sq metres
(Excluding Restricted Heights) 4138 sq feet
Gross Internal Area = 404.4 sq metres
(Including Restricted Heights) 4353 sq feet

SITE 0.15 ACRES



LOWER GROUND FLOOR



GROUND FLOOR



FIRST FLOOR



SECOND FLOOR