



TK International  
020 7794 8700  
www.t-k.co.uk

Residential Sales  
Residential Lettings  
Property Management

Sales Office:  
9 Heath Street  
Hampstead  
London NW3 6TP  
E: sales@t-k.co.uk

Lettings Office:  
16-18 Heath Street  
Hampstead  
London NW3 6TE  
E: lettings@t-k.co.uk

tk.international  
TK International  
TK International

Est.  
1998



## **Fitzjohn's Avenue Hampstead NW3**

For sale with no onward chain, accessed via a private entrance and forming part of an impressive detached residence, a well presented and exceptionally spacious two bedroom apartment with a south west facing private garden and designated off street parking, moments from the heart of Hampstead Village.

This charming home measures 1,176 sq ft (109 sq mt) and benefits from generously proportioned rooms, including a 20'3" reception room with double doors leading to the private garden and a separate kitchen/breakfast room with ample storage. In addition, there is a separate study room situated directly off the master bedroom, ideal for a "work from home" set up.

The property is ideally situated for access to the various boutiques and eateries of Hampstead Village (Northern Line), and is within easy reach of Finchley Road (Jubilee & Metropolitan Lines) as well as the numerous highly regarded schools in the area.

Accommodation:

Master Bedroom With Ensuite Bathroom, Bedroom Two, Study/Nursery, Shower Room, Reception/Dining Room, Kitchen/Breakfast Room, Private Garden, Private Entrance, Off Street Parking.

**£960,000**

**SOLE AGENT**

**Share of Freehold**











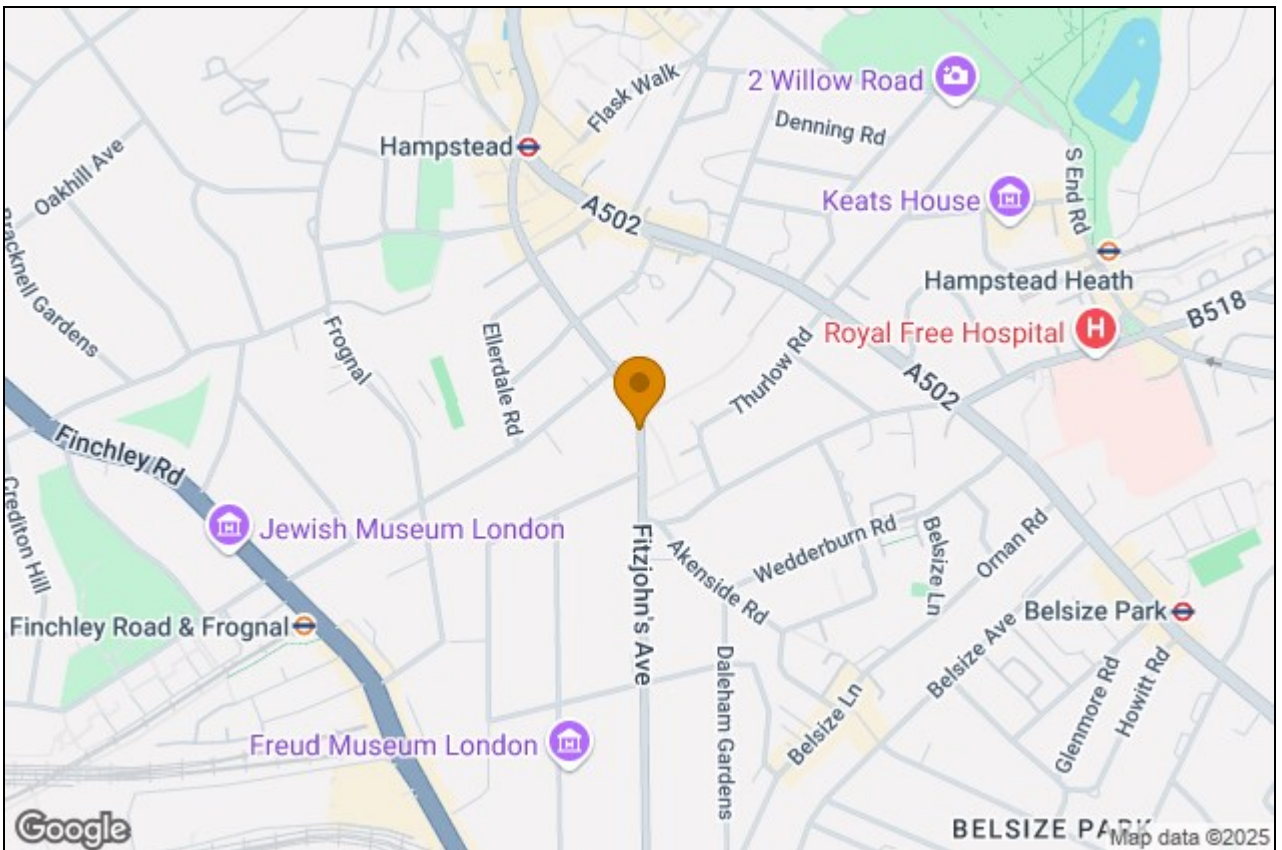










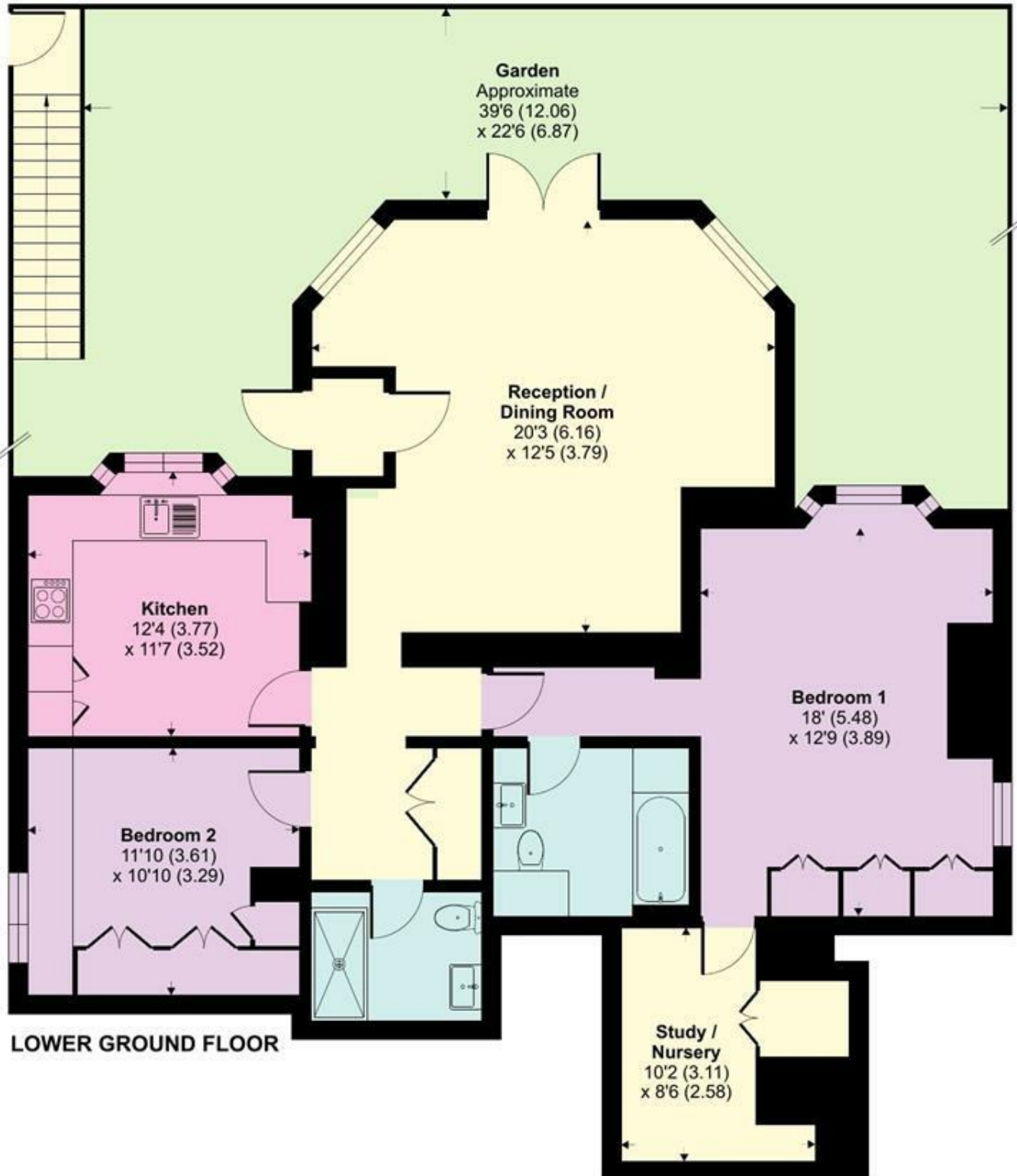




# Fitzjohns Avenue, Hampstead, NW3

Approximate Area = 1176 sq ft / 109.2 sq m

For identification only - Not to scale



Certified  
Property  
Measurer

Floor plan produced in accordance with RICS Property Measurement Standards incorporating International Property Measurement Standards (IPMS2 Residential). © nichecom 2024.  
Produced for TK (Hampstead) Ltd. REF: 1139265