



TK International
020 7794 8700
www.t-k.co.uk

Residential Sales
Residential Lettings
Property Management

Sales Office:
9 Heath Street
Hampstead
London NW3 6TP
E: sales@t-k.co.uk

Lettings Office:
16-18 Heath Street
Hampstead
London NW3 6TE
E: lettings@t-k.co.uk

 tk.international
 TK International
 TK International

Est.
1998



Prince Arthur Mews Hampstead Village NW3

Discreetly located within the heart of Hampstead Village, within a secure gated and camera monitored mews, is this beautifully presented two bedroom townhouse which enjoy dedicated parking for two/three cars as well as a south facing patio.

The house has been the subject of a full refurbishment programme throughout with the addition of a substantial lower ground floor area plus two further floors.

Our client has ensured that the house provides up to date security technology both within and outside of the property, with the added benefits of air-conditioning, fully insulated walls and rain sensors to overhead skylights as well as an electric car charging point on the driveway.

This very private home offers a large reception room plus guest WC on the ground floor, kitchen/diner, bedroom two, a shower room and utility room on the lower ground floor and a bright and generous principal suite which takes up all of the first floor and comprises a double bedroom with en-suite bathroom and dressing room.

The charm and vibrancy of the Village is just beyond the gates of the mews, with its excellent restaurants, cafes, bars, artisan food shops and boutiques as well as Hampstead underground station (Northern Line).

Council Tax Band: G | Security Deposit Required: 5 Weeks Rent | Holding Deposit Required: 1 Weeks Rent | Deposits displayed based on an Assured Shorthold Tenancy Agreement).

£5,500 Per Month

SOLE AGENT





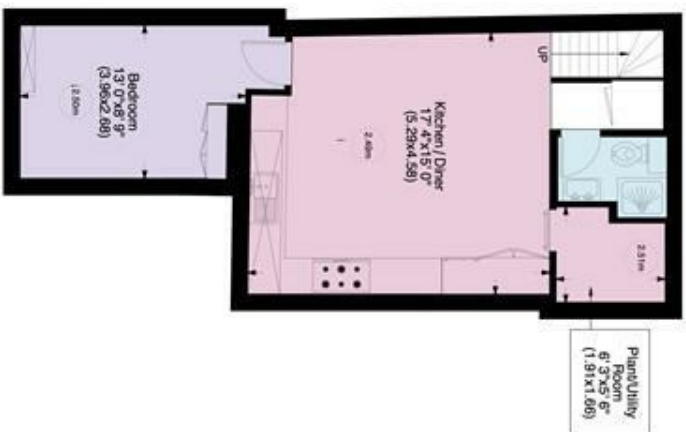


Prince Arther Mews NW3

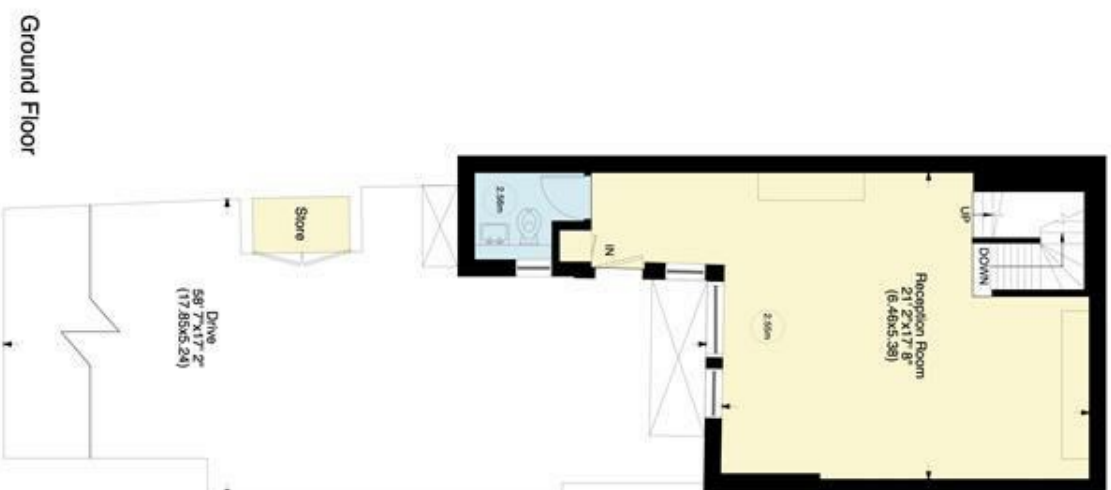
Gross internal area (approx.)

121 Sq m (1302 Sq ft)

For Identification only, Not to Scale



Basement



Ground Floor



First Floor



www.virtualtours.london

Not to scale, for guidance only and must not be relied upon as a statement of fact. All measurements and areas are approximate only (and have been prepared in accordance with the current edition of the RICS Code of Measuring Practice).