



TK International
020 7794 8700
www.t-k.co.uk

Residential Sales
Residential Lettings
Property Management

Sales Office:
9 Heath Street
Hampstead
London NW3 6TP
E: sales@t-k.co.uk

Lettings Office:
16-18 Heath Street
Hampstead
London NW3 6TE
E: lettings@t-k.co.uk

tk.international
TK International
TK International

Est.
1998



Wycombe Gardens Golders Green NW11

A delightful five-bedroom semi-detached family home, presented in good condition throughout and located on a quiet residential turning just off Hodford Road.

The bright and well-proportioned accommodation includes an 18' bay-fronted family room on the ground floor, alongside a superb L-shaped reception/dining room and a separate fitted kitchen.

On the first floor there is a generous principal bedroom with en-suite shower room, three further bedrooms, and a modern family bathroom. The second floor offers an additional double bedroom, a further bathroom, and ample storage within the remaining attic space.

This attractive home further benefits from a 71' south-facing rear garden and off-street parking for two cars.

Golders Green's wide selection of shops, cafés and restaurants, together with the underground station and bus terminal, are all within half a mile.

£1,999,950

SOLE AGENT

Freehold

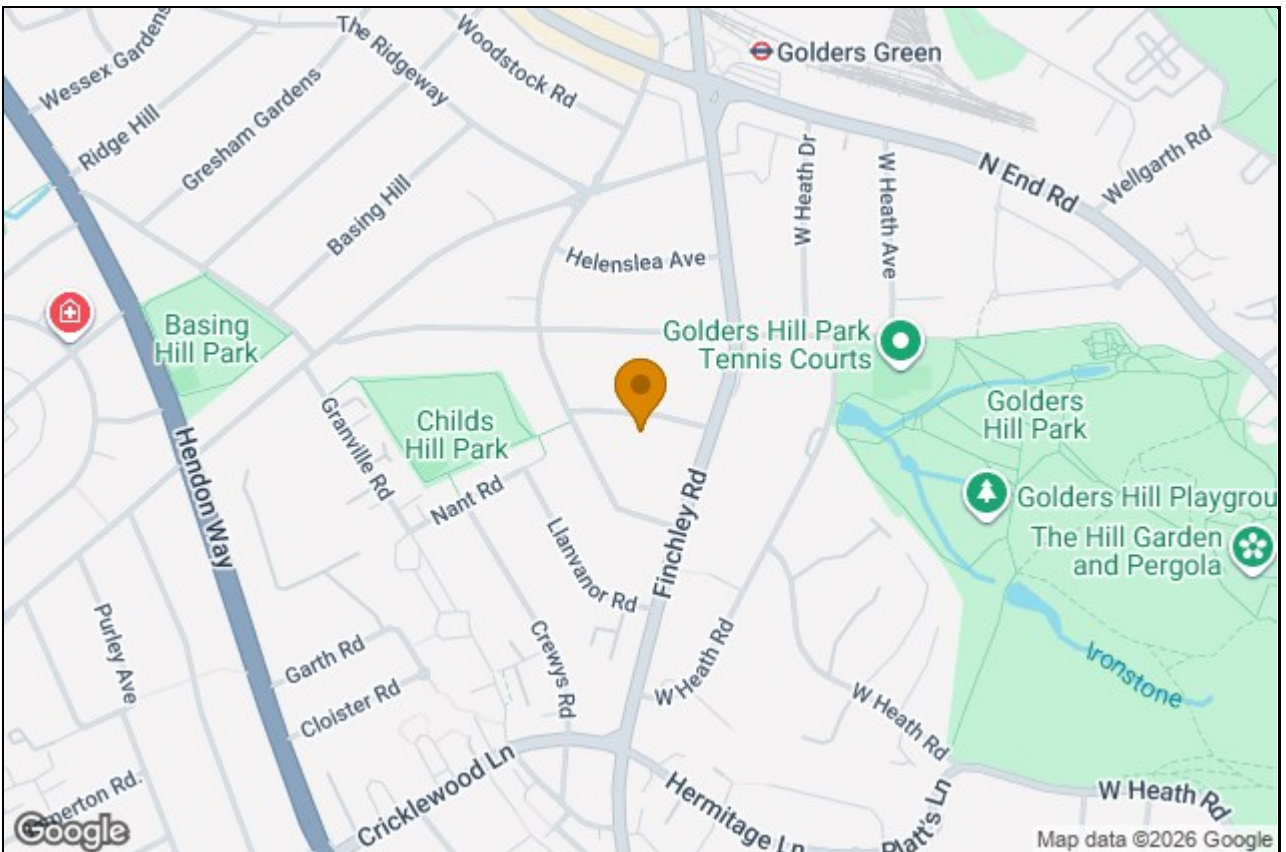






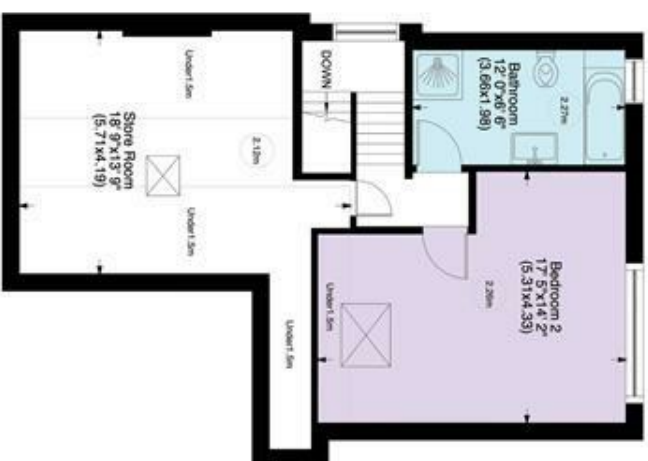






Wycombe Gardens NW11

Gross internal area (approx.)
 229 Sq m (2463 Sq ft) Including under 1.5m
 208 Sq m (2241 Sq ft) Excluding under 1.5m
 For identification only. Not to Scale



Ground Floor

First Floor

Second Floor

www.WilliamsSalisburyPhotography
 Not to Scale, for guidance only and must not be relied upon as a statement to fact. All measurements are approximate only (and have been prepared in accordance with the current edition of the RICS Code of Measuring Practice).