



TK International
020 7794 8700
www.t-k.co.uk

Residential Sales
Residential Lettings
Property Management

Sales Office:
9 Heath Street
Hampstead
London NW3 6TP
E: sales@t-k.co.uk

Lettings Office:
16-18 Heath Street
Hampstead
London NW3 6TE
E: lettings@t-k.co.uk

tk.international
TK International
TK International

Est.
1998



Thurlow Road Hampstead NW3

Occupying the upper floors of an imposing detached corner building on Thurlow Road at the junction with Lyndhurst Terrace, this impressive five bedroom, two bathroom duplex apartment extends to approximately 1,873 sq ft (2,235 sq ft including restricted height) and features direct access to a spectacular 360 degree panoramic roof terrace, alongside a rare triple aspect that floods the interior with exceptional natural light.

The accommodation offers generous and versatile living space, including a well proportioned reception room, a modern, well appointed kitchen, and a separate dining room, ideal for both family life and entertaining.

The roof terrace is a truly outstanding feature, enjoying sweeping views across Hampstead's rooftops and Hampstead Heath in one direction, and far reaching vistas towards the City of London in the other. It provides a superb sun trap and an exceptional setting for relaxing or hosting, from bright daytime moments to evening gatherings under the stars.

Further benefits include a rare double garage with additional parking directly in front. While well presented, the apartment also offers excellent scope to enhance and create a particularly impressive family home.

Thurlow Road is an enviable tree lined turning, moments from Hampstead Heath and ideally positioned for renowned local schools, as well as the boutiques, delis and restaurants of Hampstead Village and Belsize Park (Northern Line).

£2,500,000

SOLE AGENT

Share of Freehold



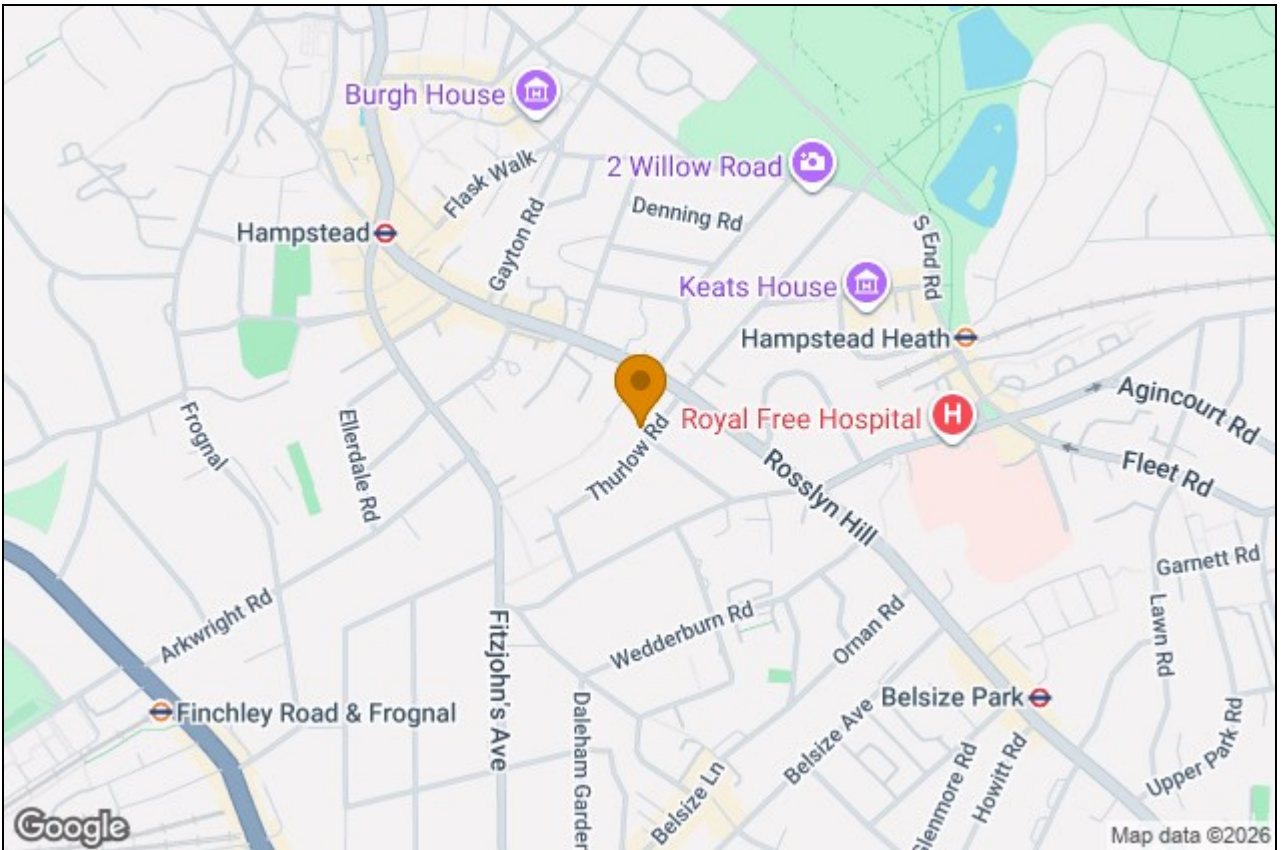




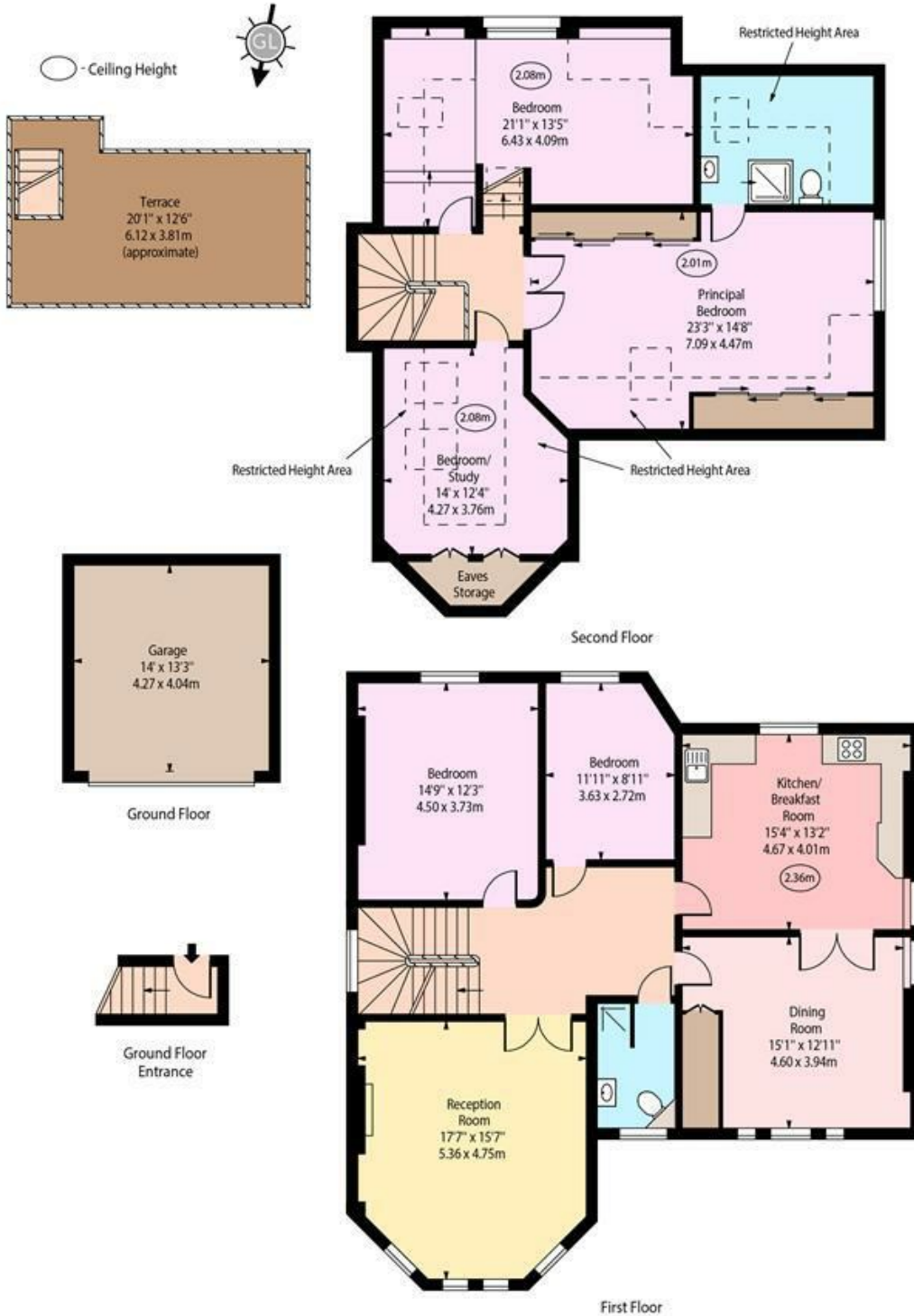








Thurlow Road, NW3



Approx Gross Internal Area 1873 Sq Ft - 174.00 Sq M
(Excluding Garage)

Approx. Floor Area Including Restricted Heights 2235 Sq Ft - 207.63 Sq M
(Including Eaves Storage)
(Excluding Garage)

Every attempt has been made to ensure the accuracy of the floor plan shown. However, all measurements, fixtures, fittings, and data shown are approximate interpretations and for illustrative purposes only. Measured according to the RICS. Not To Scale.

www.goldlens.co.uk
Prepared for TK International
Ref. No. 031152E