



TK International
020 7794 8700
www.t-k.co.uk

Residential Sales
Residential Lettings
Property Management

Sales Office:
9 Heath Street
Hampstead
London NW3 6TP
E: sales@t-k.co.uk

Lettings Office:
16-18 Heath Street
Hampstead
London NW3 6TE
E: lettings@t-k.co.uk

tk.international
TK International
TK International

Est.
1998



Fitzjohn's Avenue Hampstead NW3

A rare NW3 landmark, this four bedroom, three bathroom duplex penthouse crowns a restored WWII watch tower, offering private ownership of the original turret itself. Spanning the top two floors, it combines remarkable heritage with refined contemporary design, panoramic skyline views and exceptional ceiling heights.

Once the tallest point in London and later requisitioned by the RAF as a wartime lookout, the building has evolved into an exclusive residential address. The penthouse stands as its crowning jewel, where original architectural character meets meticulous modern craftsmanship.

The expansive open plan reception and dining space is framed by far reaching views across London, enhanced by double height volumes and dramatic glazing. A bespoke kitchen with integrated appliances and stone worktops sits at the heart of the home, designed for both everyday living and entertaining.

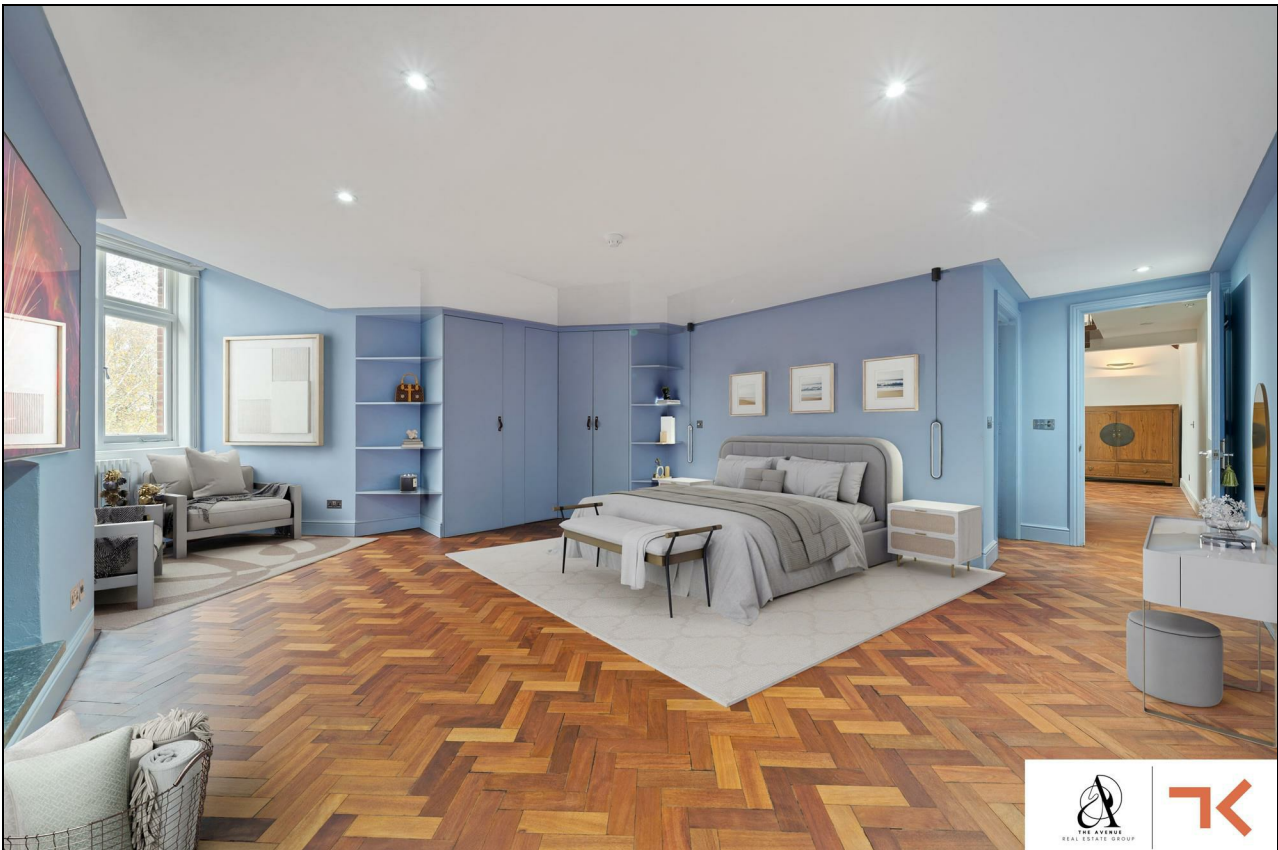
All four bedrooms are generously proportioned with ensuite bathrooms featuring underfloor heating and high quality finishes. The principal suite includes a walk in wardrobe and elevated views, while the turret level provides a spectacular vantage point unlike anything else on the market.

Further enhancements include glass floor detailing and reclaimed mahogany parquet sourced from a Scottish castle, adding warmth and distinction.

Moments from Hampstead Heath, Belsize Park and excellent transport links, this secure share of freehold residence offers history, privacy and presence in equal measure.

£2,500,000

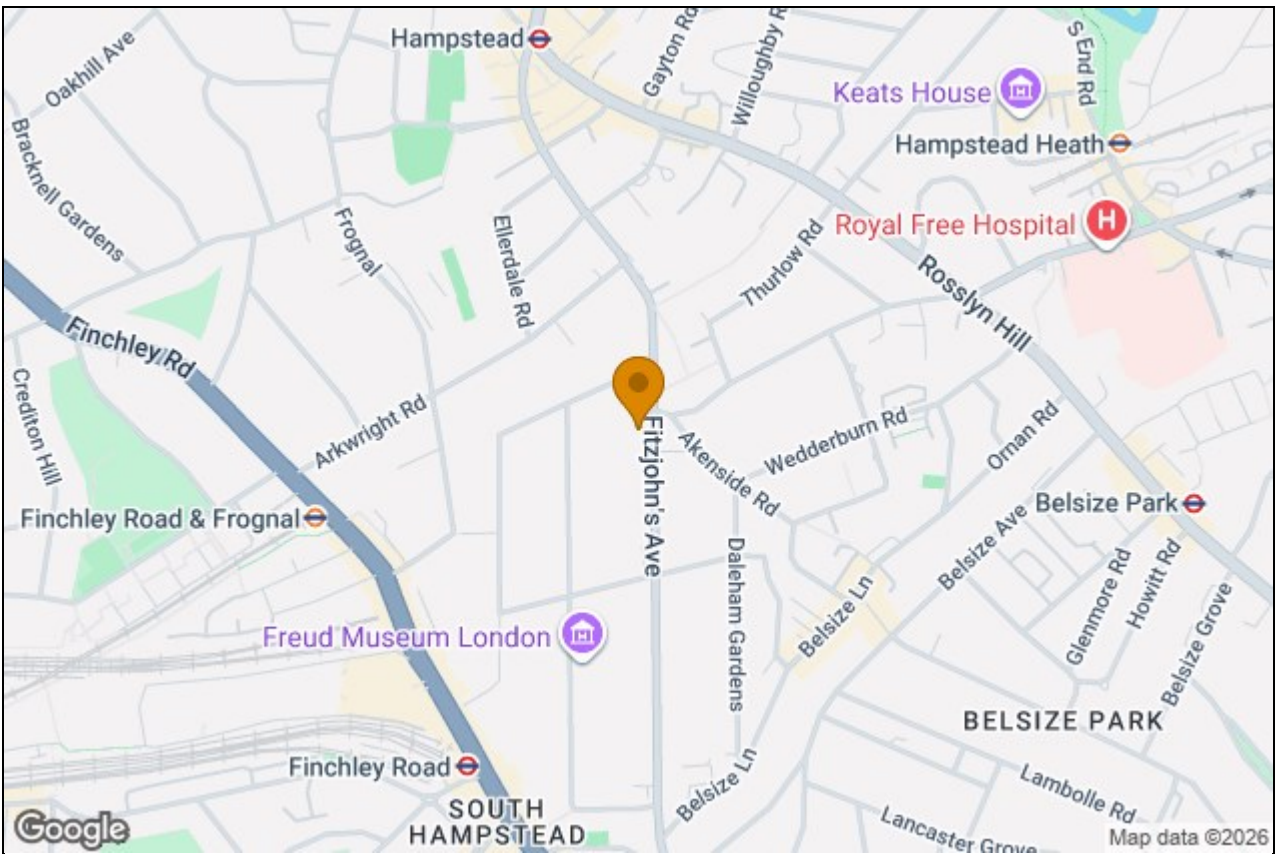
Share of Freehold









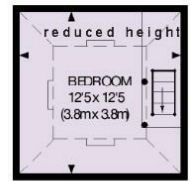




THIRD FLOOR
 GROSS INTERNAL
 FLOOR AREA 975 SQ FT



FOURTH FLOOR
 GROSS INTERNAL
 FLOOR AREA 1097 SQ FT



SIXTH FLOOR
 GROSS INTERNAL
 FLOOR AREA 154 SQ FT



FIFTH FLOOR
 GROSS INTERNAL
 FLOOR AREA 156 SQ FT

APPROX. GROSS INTERNAL FLOOR AREA 2384 SQ FT / 221 SQ M
 (includes Reduced Height Areas)

*This floorplan is for illustration purposes and may not truly reflect design or dimensions and should not be used for valuation or condition purposes.