



TK International
020 7794 8700
www.t-k.co.uk

Residential Sales
Residential Lettings
Property Management

Sales Office:
9 Heath Street
Hampstead
London NW3 6TP
E: sales@t-k.co.uk

Lettings Office:
16-18 Heath Street
Hampstead
London NW3 6TE
E: lettings@t-k.co.uk

tk.international
TK International
TK International

Est.
1998



Lyndhurst Gardens London NW3

A rare opportunity to rent this beautifully refurbished two bedroom first floor apartment, ideally positioned just 0.2 miles from Belsize Village. The property offers a bright and spacious reception and dining area leading onto a generous private terrace, a fully fitted kitchen, principal bedroom with en suite shower room, a second double bedroom, and a separate family bathroom.

Further benefits include high ceilings, wooden flooring throughout, and excellent built in storage. Finished to a high specification, the apartment is well located for transport links, being approximately 0.5 miles from Belsize Park and Hampstead Underground stations (Northern Line), as well as Swiss Cottage Underground station (Jubilee Line).

£3,800 Per Month

SOLE AGENT

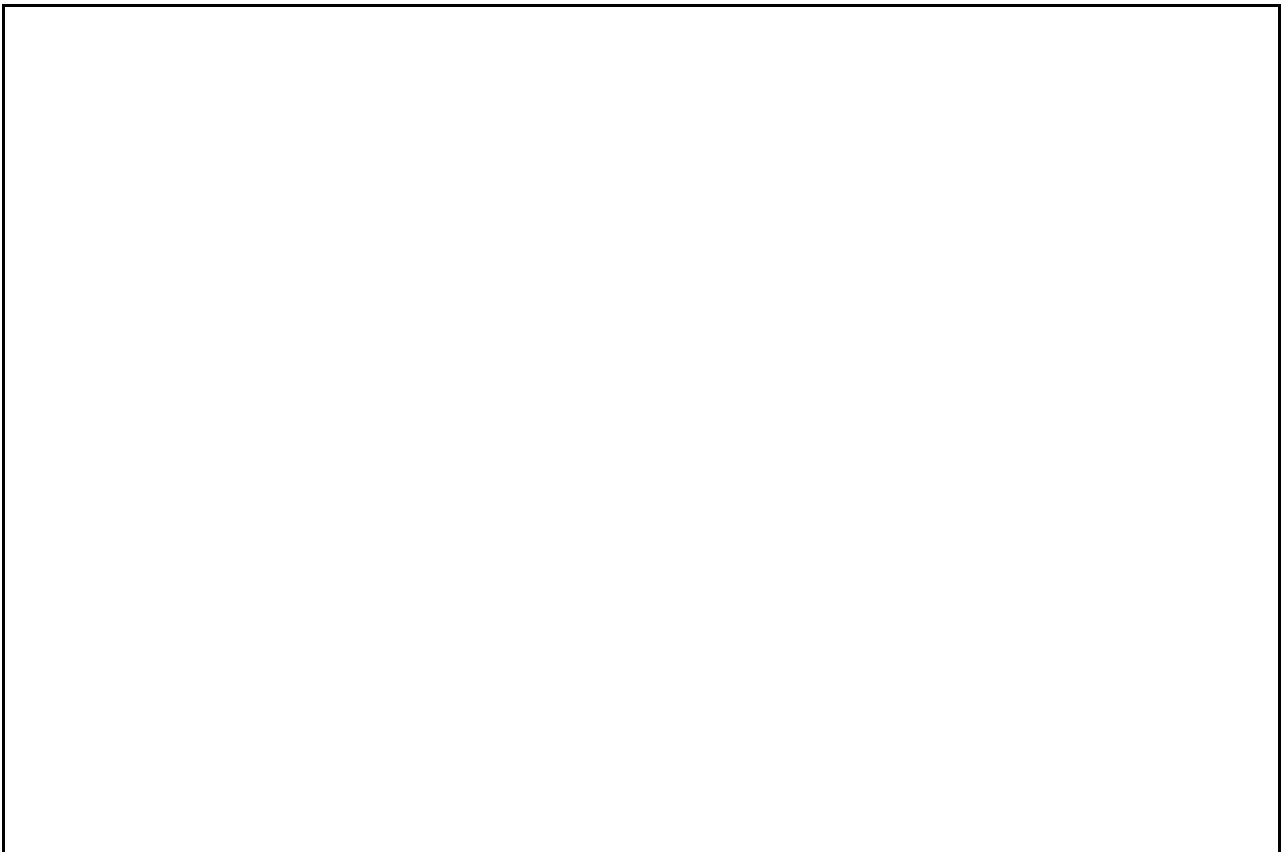








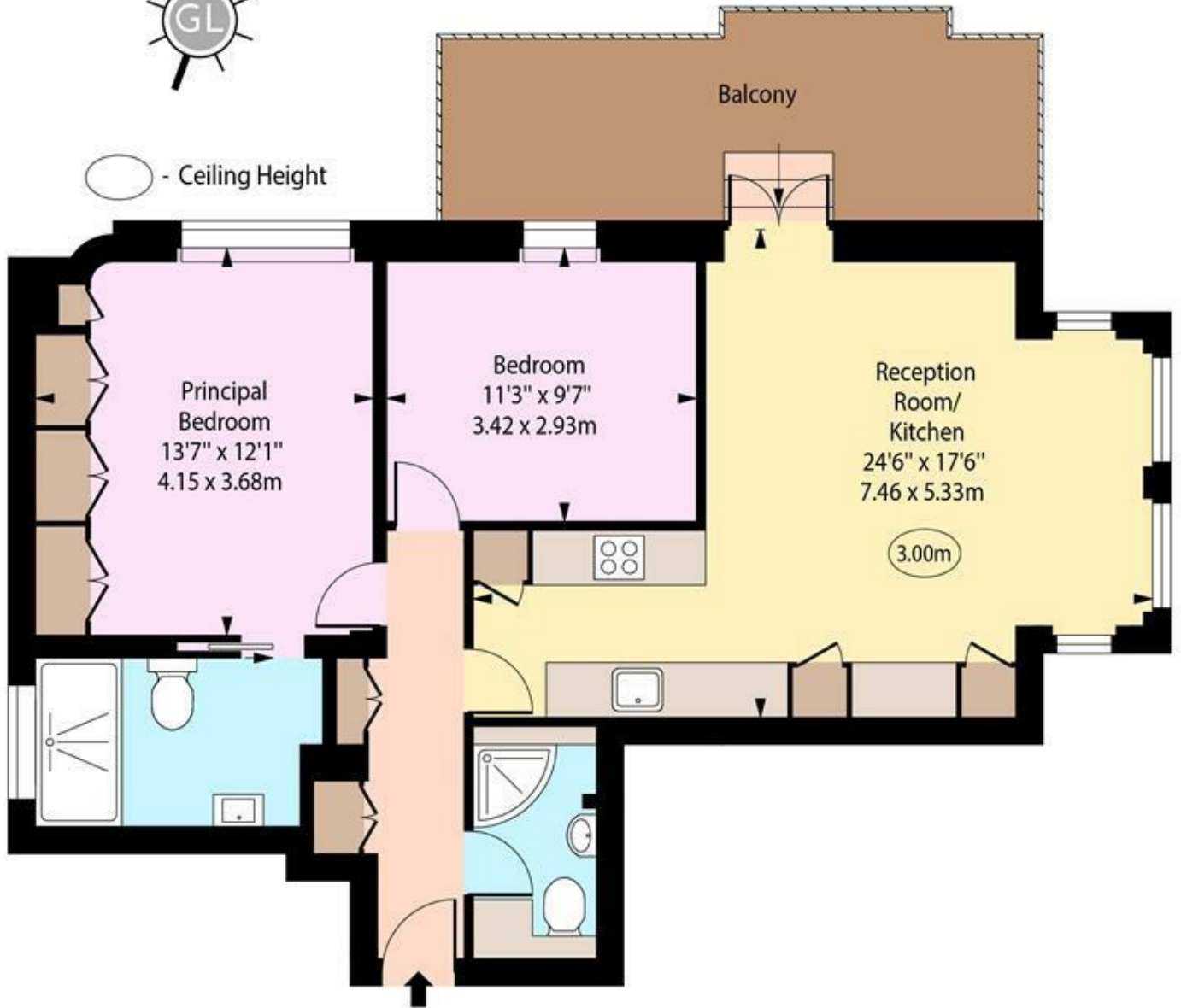




Lyndhurst Gardens, NW3



○ - Ceiling Height



First Floor

Approx Gross Internal Area 755 Sq Ft - 70.14 Sq M

Every attempt has been made to ensure the accuracy of the floor plan shown. However, all measurements, fixtures, fittings, and data shown are approximate interpretations and for illustrative purposes only. Measured according to the RICS. Not To Scale.

www.goldlens.co.uk

Prepared for TK International

Ref. No. 031390J