



TK International
020 7794 8700
www.t-k.co.uk

Residential Sales
Residential Lettings
Property Management

Sales Office:
9 Heath Street
Hampstead
London NW3 6TP
E: sales@t-k.co.uk

Lettings Office:
16-18 Heath Street
Hampstead
London NW3 6TE
E: lettings@t-k.co.uk

tk.international
TK International
TK International

Est.
1998



Lyndale Avenue Childs Hill NW2

An attractive four bedroom semi-detached family house (2,418sqft / 224sqm gross), situated in this quiet tree-lined turning.

The ground floor accommodation is ideal for entertaining and boasts two reception rooms and a large kitchen/breakfast room leading out to the circa 130' mature and well-stocked rear garden.

The first floor enjoys a large principal bedroom with en suite bathroom and there are two further bedrooms and a family bathroom. The second floor lends itself to a large 20' fourth bedroom and there is a large storage area within the eaves.

There is a brick built garage (accessed via a shared driveway) which could form part of a rear extension.

Lyndale Avenue is a popular tree-lined road, situated within a short walk to the transport facilities on Finchley Road which provides easy access into the West End and City.

£1,750,000

Freehold













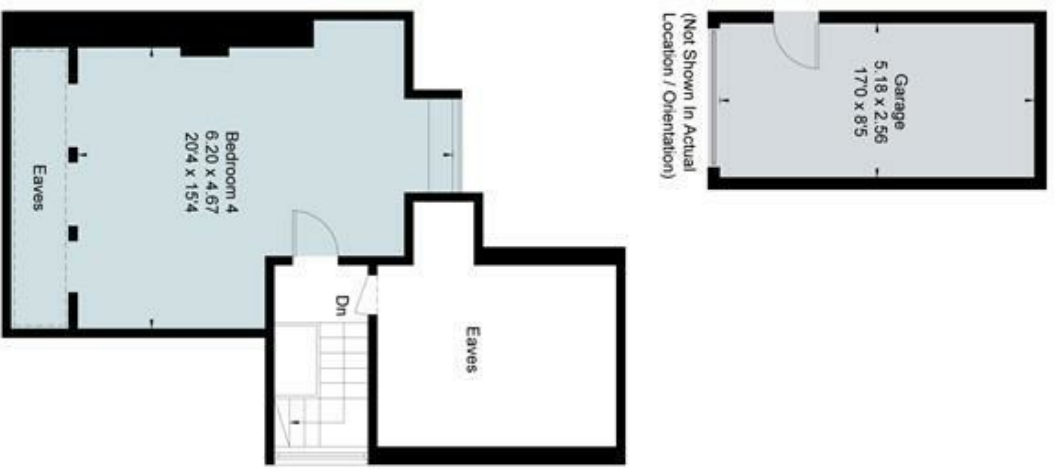
Approximate Floor Area = 211.4 sq m / 2275 sq ft
Garage = 13.3 sq m / 143 sq ft
Total = 224.7 sq m / 2418 sq ft (Including Eaves)



Ground Floor



First Floor



Second Floor



This floor plan has been drawn in accordance with RICS Property Measurement 2nd edition.
All measurements, including the floor area, are approximate and for illustrative purposes only. @fourwalls-group.com #85727