



TK International
020 7794 8700
www.t-k.co.uk

Residential Sales
Residential Lettings
Property Management

Sales Office:
9 Heath Street
Hampstead
London NW3 6TP
E: sales@t-k.co.uk

Lettings Office:
16-18 Heath Street
Hampstead
London NW3 6TE
E: lettings@t-k.co.uk

tk.international
TK International
TK International

Est.
1998



Redington Road Hampstead NW3

A striking four/five-bedroom detached modern house constructed in 2009 by the current owners and comprising approximately 6,138 sqft (570 sqm) of contemporary design, located at the Village end of one of Hampstead's most prestigious roads.

Set securely back from the road behind gates, the house, which is arranged over four floors, provides extensive entertaining space over the ground and garden levels. The garden level, which encompasses approximately 2,500sqft, offers a vast open plan living/kitchen/family space with access to an additional bedroom, separate shower room and the indoor swimming pool. This living space also leads directly out to the garden and has access to the integral garage.

The expansive ground floor enjoys a grand double aspect reception room, study, guest WC and impressive entrance lobby. Whilst three large bedrooms and three bathrooms (two en-suite) occupy the first floor, the top floor boasts a particularly bright and spacious principal suite with en-suite dressing room, large bathroom and a secluded balcony.

The house was completed to a particularly high specification and provides a smart system, air conditioning, underfloor heating and many other eco and noteworthy features.

Ideally situated within a short walk to Hampstead Village with it's wide choice of restaurants, cafes and shops as well as the underground station (Northern Line).

Guide Price £9,500,000

JOINT SOLE AGENT

Freehold











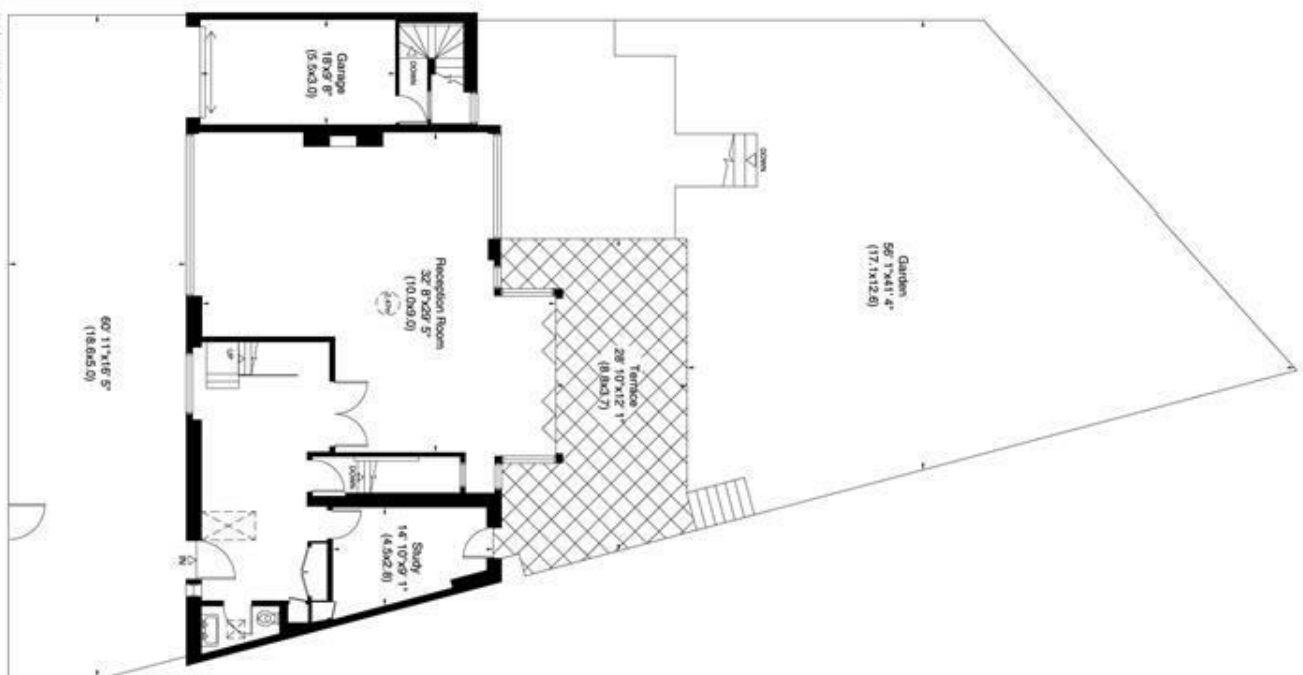
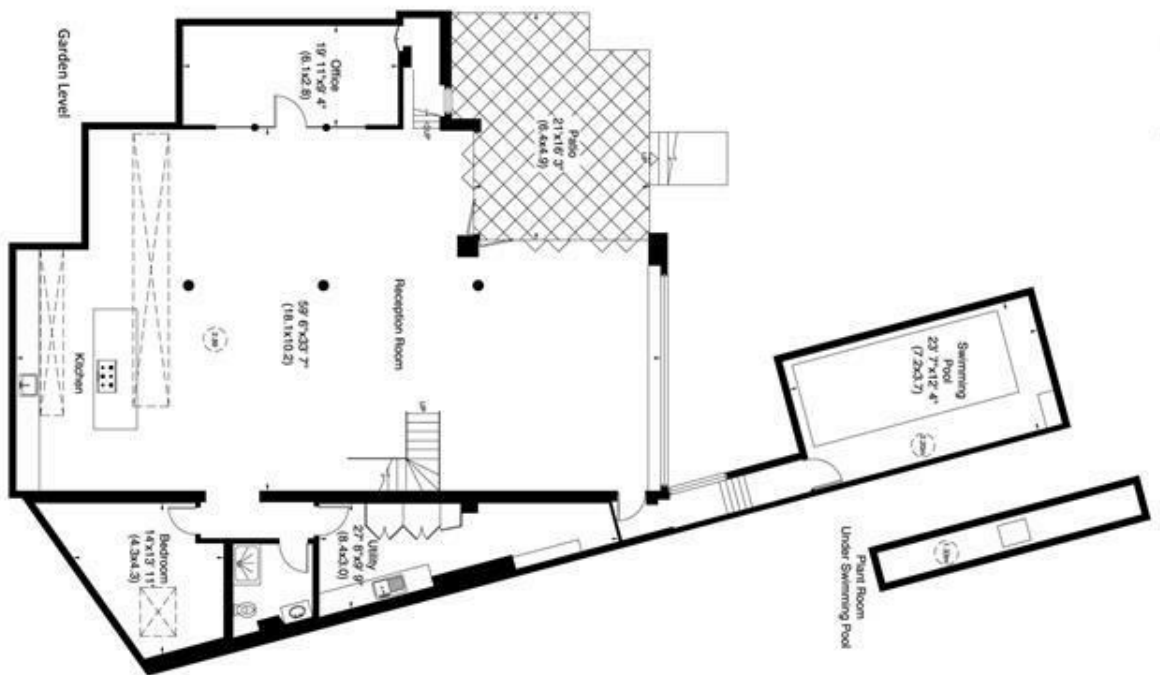




14A Redington Road, NW3

Approximate Gross Internal Area
570 sq m/ 6138 sq ft including Garage and Plant Room

Not to Scale. For Information Only



For guidance only and must not be relied upon as a statement of fact. All measurements and areas are approximate only (and have been prepared in accordance with the current edition of the BS Code of Measuring Practice).

