



TK International  
020 7794 8700  
www.t-k.co.uk

Residential Sales  
Residential Lettings  
Property Management

Sales Office:  
9 Heath Street  
Hampstead  
London NW3 6TP  
E: sales@t-k.co.uk

Lettings Office:  
16-18 Heath Street  
Hampstead  
London NW3 6TE  
E: lettings@t-k.co.uk

tk.international  
 TK International  
 TK International

Est.  
1998



## Mansion Gardens Hampstead NW3

Nestled within this exclusive and secure gated domain located between the open expanses of 'West Heath' and Hampstead Village, a rarely available two bedroom, two bathroom linked detached contemporary house arranged predominantly over two floors and presented in good decorative condition throughout.

This bright home offers bedroom accommodation on the ground floor including a master suite with en-suite bathroom and mezzanine dressing room. A spiral staircase leads up from the entrance lobby to a vaulted 19'6 double reception room with feature fireplace and kitchen. Off the reception room is a large elevated sun-trap deck with views across to the Heath. The property also includes air-conditioning in the reception room and both bedrooms.

In addition, there is also a secluded and shaded ground floor patio with a feature pond. To the front of the house is off street parking for one car (or two small cars back to back).

The Village, with its public transport links, restaurants, cafes and shops is but a short five/ten minute walk.

EPC Rating: D  
Council Tax Band: G

**£4,500 Per Month**

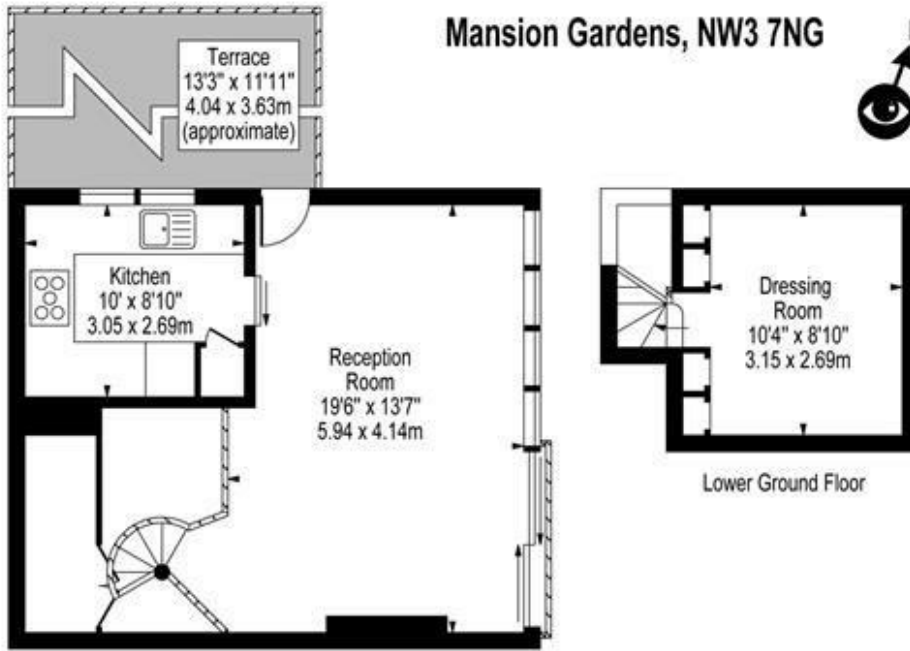
**SOLE AGENT**





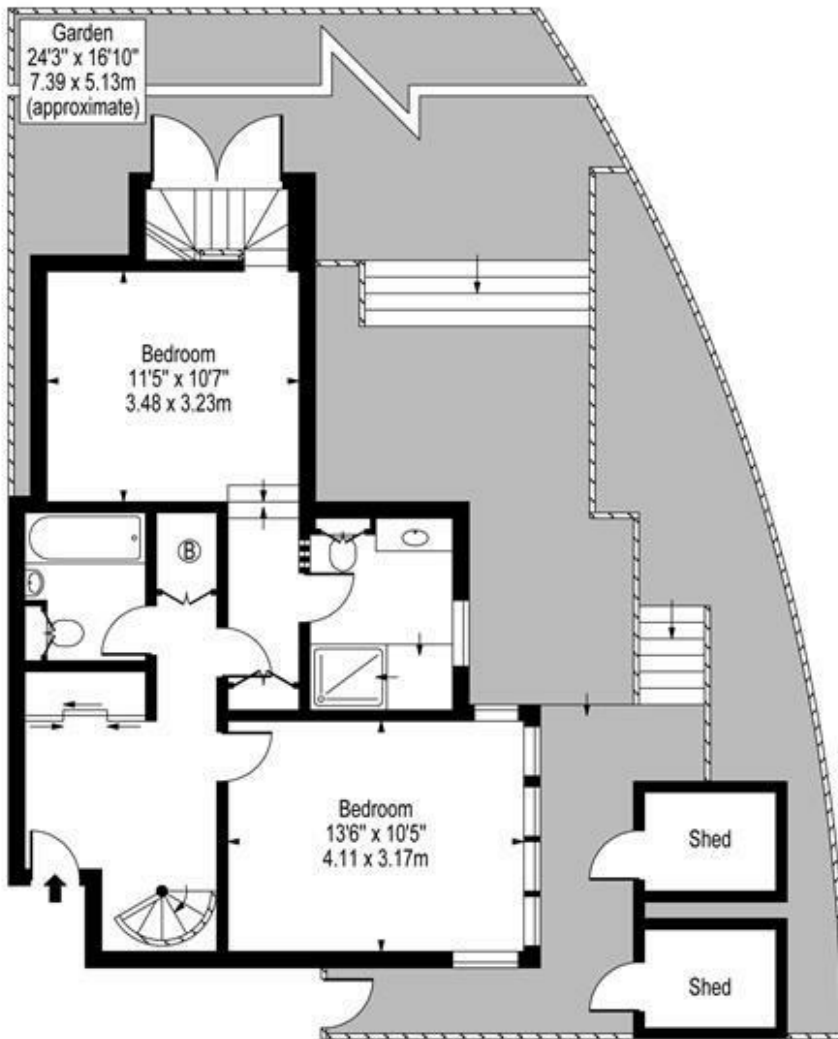


# Mansion Gardens, NW3 7NG



First Floor

Lower Ground Floor



Ground Floor

Approx Gross Internal Area 1116 Sq Ft - 103.68 Sq M

(Excluding Sheds)

For Illustration Purposes Only - Not To Scale

Floor Plan by [www.bpmmediagroup.com](http://www.bpmmediagroup.com)

Ref: No. P30956