



TK International  
020 7794 8700  
www.t-k.co.uk

Residential Sales  
Residential Lettings  
Property Management

Sales Office:  
9 Heath Street  
Hampstead  
London NW3 6TP  
E: sales@t-k.co.uk

Lettings Office:  
16-18 Heath Street  
Hampstead  
London NW3 6TE  
E: lettings@t-k.co.uk

tk.international  
 TK International  
 TK International

Est.  
1998



## Langland Gardens Hampstead NW3

Occupying the lower ground floor of an impressive and elegant mansion block, this exceptional four/five bedroom apartment extends to approximately 2,450 sq ft and offers beautifully presented lateral accommodation.

The property is centred around wonderful living, dining and entertaining space, including a spacious reception room and a superbly appointed and 20'5" x 19' south facing kitchen/dining room, which has been designed with both style and practicality in mind. The living accommodation also incorporates a cinema/media room and study, which could also serve and function very well as a fifth bedroom.

The principal bedroom enjoys the luxury of an en suite bathroom, with three further generously proportioned double bedrooms, two of which also benefit from en suite facilities, complemented by a stylish family shower room. A utility room provides further practicality.

Residents enjoy access to vast and beautifully maintained communal gardens, providing a peaceful oasis in this sought after location of Hampstead.

Langland Gardens is superbly positioned within easy reach of the boutiques, cafés and restaurants of Hampstead Village, together with the extensive shopping and transport facilities of Finchley Road and West Hampstead. Finchley Road Underground Station (Jubilee and Metropolitan Line) is conveniently located nearby, providing excellent connectivity across Central London and beyond.

**£1,595,000**

**SOLE AGENT**

**Share of Freehold**













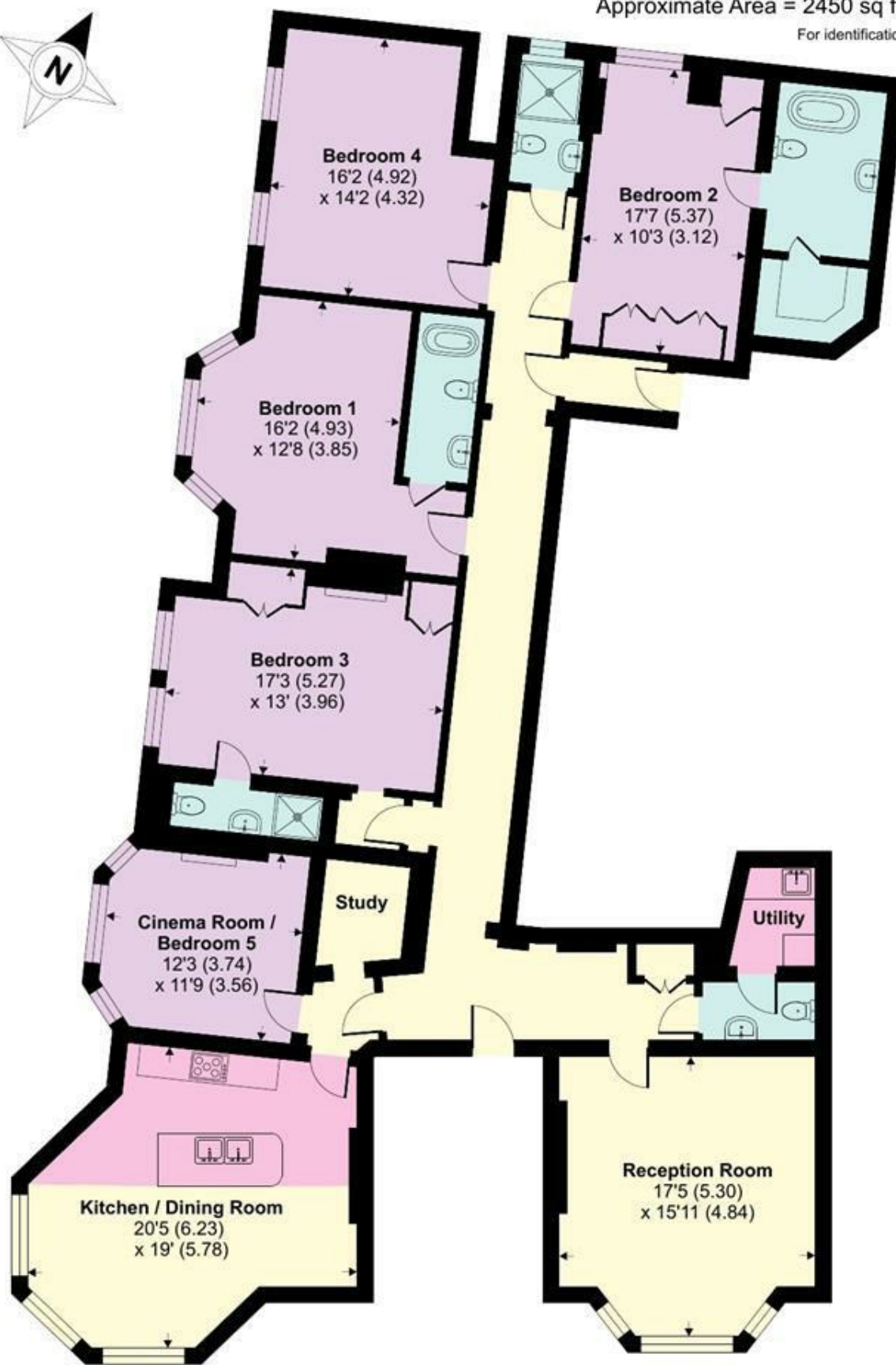




# Leinster Mansions, Langland Gardens, Hampstead, NW3

Approximate Area = 2450 sq ft / 227.6 sq m

For identification only - Not to scale



**GROUND FLOOR**

