



TK International
020 7794 8700
www.t-k.co.uk

Residential Sales
Residential Lettings
Property Management

Sales Office:
9 Heath Street
Hampstead
London NW3 6TP
E: sales@t-k.co.uk

Lettings Office:
16-18 Heath Street
Hampstead
London NW3 6TE
E: lettings@t-k.co.uk

tk.international
TK International
TK International

Est.
1998



Canfield Gardens South Hampstead NW6

This stunning four bedroom duplex apartment occupies the second and third floors of an impressive Victorian building on one of South Hampstead's most desirable residential streets. Beautifully designed throughout, it offers an exceptional setting for those seeking a truly unique home, extending to approximately 2,066 sq ft.

The second floor is anchored by a remarkable double-height reception room, complete with marble fireplace and bespoke floor-to-ceiling library, flowing through to a superb open-plan kitchen and dining room measuring over 34ft in length. The designer kitchen features a large island, sleek matte cabinetry and a concealed pantry bar. A sculptural spiral staircase with hand-painted mural connects the floors in style, with two further bedrooms and a bathroom also on this level.

The third floor houses the principal bedroom suite with its own dressing room, alongside a third bedroom, with both floors served by beautifully finished bathrooms. The upper floor also opens onto a wonderfully private roof terrace of approximately 18ft x 10ft, with open sky views across the neighbourhood.

£11,500 PCM



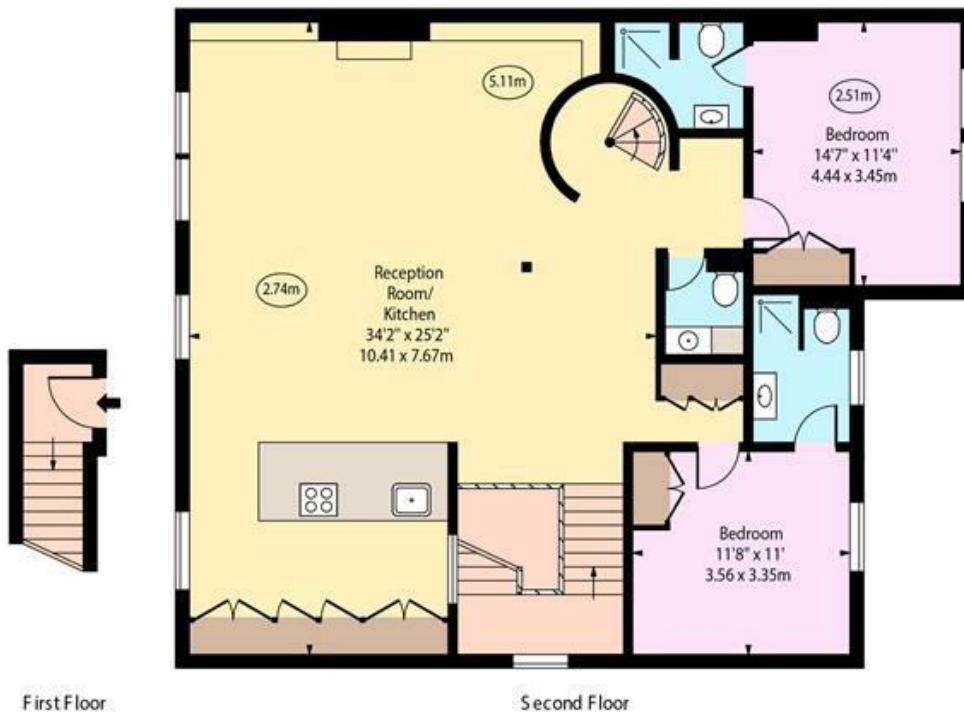
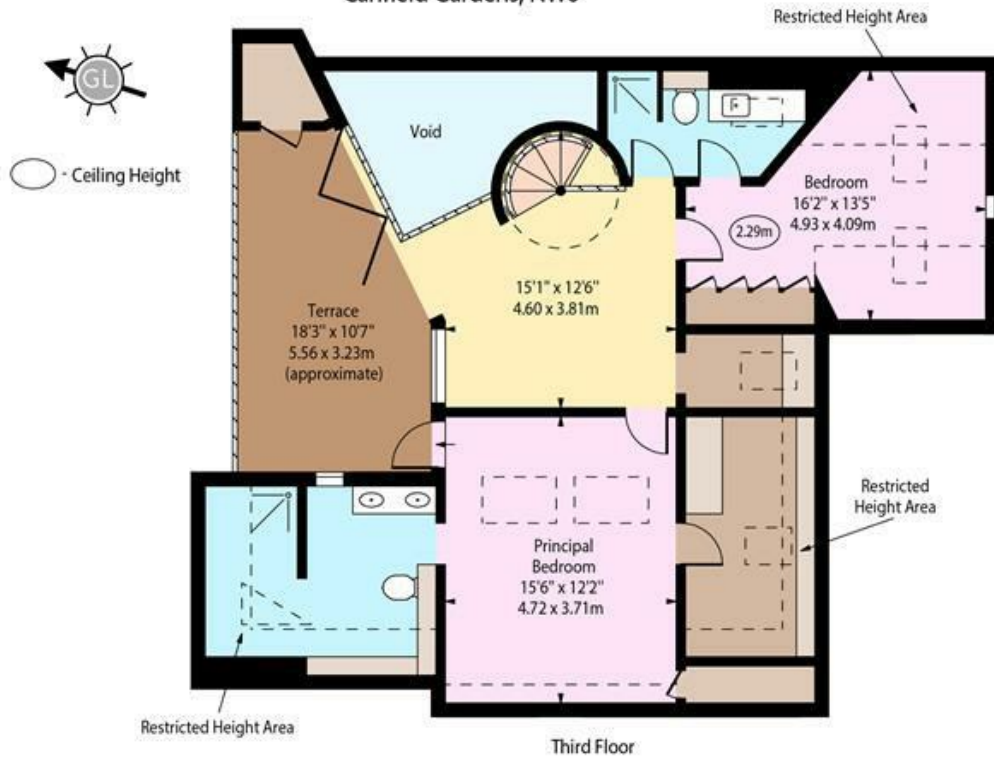








Canfield Gardens, NW6



Approx Gross Internal Area 2066 Sq Ft - 191.93 Sq M

Approx. Floor Area Including Restricted Heights 2246 Sq Ft - 208.65 Sq M
(Excluding Void)

Every attempt has been made to ensure the accuracy of the floor plan shown. However, all measurements, fixtures, fittings, and data shown are approximate interpretations and for illustrative purposes only. Measured according to the RICS. Not To Scale.

www.goldlens.co.uk
Prepared for TK International
Ref. No. 031649K